

# TekExpress® Serial ATA Automated Solutions Installation Manual



077-0143-01



**TekExpress® Serial ATA  
Automated Solutions  
Installation Manual**

Copyright © Tektronix. All rights reserved. Licensed software products are owned by Tektronix or its subsidiaries or suppliers, and are protected by national copyright laws and international treaty provisions.

Tektronix products are covered by U.S. and foreign patents, issued and pending. Information in this publication supersedes that in all previously published material. Specifications and price change privileges reserved.

TEKTRONIX and TEK are registered trademarks of Tektronix, Inc.

TekExpress is a registered trademark of Tektronix, Inc.

## **Contacting Tektronix**

Tektronix, Inc.  
14200 SW Karl Braun Drive  
P.O. Box 500  
Beaverton, OR 97077  
USA

For product information, sales, service, and technical support:

- In North America, call 1-800-833-9200.
- Worldwide, visit [www.tektronix.com](http://www.tektronix.com) to find contacts in your area.

---

# Table of Contents

Preface ..... 1

    Getting Started ..... 1

    DVD Browser ..... 2

Product Description ..... 3

    Install Requirements ..... 4

    Run Time Requirements ..... 5

    Copying AWG Setup and Real-Time Oscilloscope Setup Files ..... 5

TekExpress SATA Installation Procedure ..... 7

Custom Installation ..... 12

Launching the Application and Online Help ..... 14

Uninstalling TekExpress SATA ..... 15



---

# Preface

The guide contains installation information and the system requirements for the TekExpress Serial ATA software. Use this manual when you have already purchased the software and are ready to install it.

## Getting Started

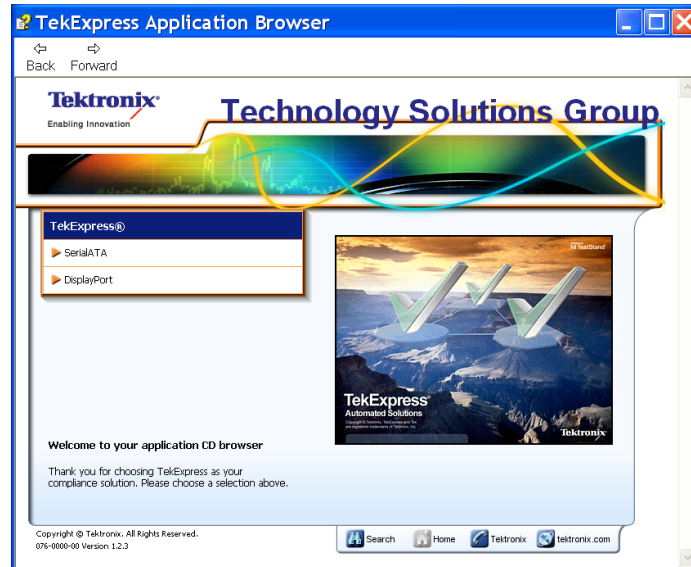
The TekExpress DVD contains a browser that allows you to view helpful information on how to install the software.

The Welcome screen and other navigation screens are provided in the DVD browser to share important information for installing TekExpress SATA onto your system.

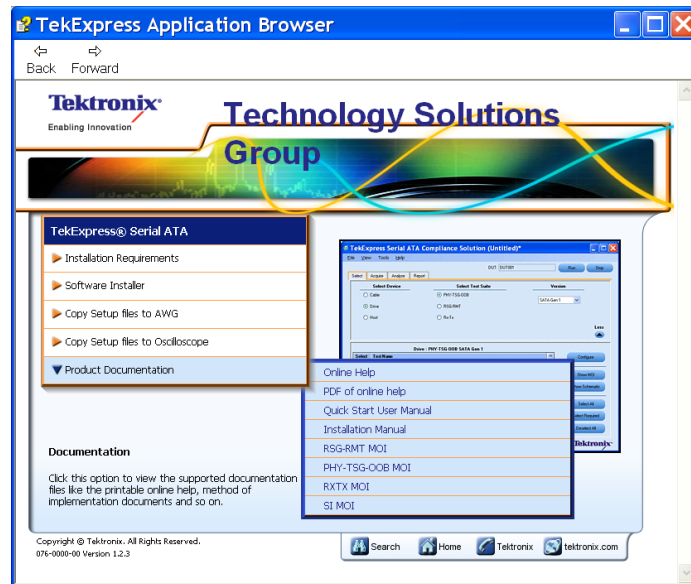
If you have to exit the DVD browser at any time (by clicking the X button), you can restart the browser by reinserting the DVD into the DVD-ROM drive.

## DVD Browser

The manuals are provided on the TekExpress DVD Browser.



To browse through the manuals, click **Serial ATA**. In the next screen, click **Product Documentation**.



The Product Documentation option contains the user manuals for TekExpress SATA in PDF format (TekExpressUserManual.pdf, TekExpressIM.pdf, and TekExpressQSUM.pdf). You can read and print the manuals using Acrobat Reader version 5.0 or greater.



Mouse-over the appropriate controls to see Installation requirements, Copy setup files to AWG, Copy setup files to Oscilloscope, and the Software Installer.

## Product Description

TekExpress is a Tektronix Automation Framework, developed to support current and future test automation needs of customers. Developed using the National Instruments® TestStand, the framework leverages the capabilities of Microsoft .NET framework. TekExpress has a highly modular architecture that enables deploying automated test solutions for various serial standards in a relatively short time. TekExpress provides a compliance test automation solution for the Serial ATA Gen 1 and Gen 2 standards.

## Install Requirements

To install and use the TekExpress software, you need a system that meets the following requirements:

**Table 1: Minimum system requirements**

<b>Processor</b>	Pentium 4/M or equivalent processor
<b>Operating System</b>	Windows XP Service Pack 2
<b>Memory</b>	1 GB of memory (512 MB minimum)
<b>Hard Disk</b>	Approximately 2 GB of available hard-disk space for the recommended installation, which includes full TekExpress installation and distributed components.
<b>Drive</b>	DVD-ROM drive
<b>Display</b>	Super VGA resolution or higher video adapter (800x600 minimum video resolution for small fonts or 1024x768 minimum video resolution for large fonts). The application is best viewed at 96 dpi display settings.
<b>Software</b>	<ul style="list-style-type: none"><li>■ IConnect® and MeasureXtractor™ Signal Integrity TDR and S-parameter Software (80SICON) Ver 4.0 or above</li><li>■ Microsoft Excel 2002 or above</li><li>■ Microsoft Internet Explorer 6.0 SP1 or later</li><li>■ Microsoft Photo Editor 3.0 or equivalent software for viewing image files</li><li>■ Adobe Reader 5.0 or equivalent software for viewing portable document format (PDF) files</li></ul>
<b>Other Devices</b>	<ul style="list-style-type: none"><li>■ Microsoft compatible mouse or compatible pointing device.</li><li>■ Four USB ports (2 USB ports minimum).</li><li>■ PCI-GPIB or equivalent interface for instrument connectivity.<sup>1</sup></li></ul>

<sup>1</sup> If TekExpress is installed on a Tektronix oscilloscope, the virtual GPIB port cannot be used by TekExpress for communicating with oscilloscope applications. If external devices like USB-GPIB or equivalent are used for instrument connectivity, ensure that the Talker Listener utility is enabled in the DPO/DSA oscilloscope's GPIB menu.

---

**NOTE.** *You need to have administrative privileges while installing TekExpress application and its dependent software components.*

---

## Run Time Requirements

The following are the run time requirements for TekExpress SATA:

**Table 2: Run time requirements**

Resource	Model supported
Signal Source	Tektronix AWG7102 (Option 6)
Real Time Oscilloscope	<ul style="list-style-type: none"> <li>■ Tektronix DPO/DSA72004/B, DPO/DSA71604/B, DPO/DSA71254/B, TDS6154C, TDS6124C</li> <li>■ For Gen1-only testing, the following oscilloscopes are also acceptable: DPO/DSA70804/B or TDS6804B</li> </ul>
Sampling Oscilloscope	Tektronix CSA/TDS/DSA 8200 with 80E04 modules (two for RxTx and four for SI)
Frame Error Analyzer	Crescent Heart Software SATA II probe adapter
Test Fixture	Crescent Heart Software Fixture TF-SATA-NE-ZP, TF-SATA-FE-ZP
DUT	A SATA Drive or Host to test

## Copying AWG Setup and Real-Time Oscilloscope Setup Files

The **Copy Setup files to AWG** option allows you to copy AWG setup files onto your AWG instrument. These setup files are required by TekExpress for SATA testing. To copy the files to the AWG, do the following:

1. Insert the TekExpress DVD Browser into the DVD-ROM drive of an AWG instrument.
2. Select **SerialATA**, and from the next screen select **Copy Setup Files to AWG**.

The **Copy Setup files to Oscilloscope** option allows you to copy real-time oscilloscope setup files onto your real-time oscilloscope. These setup files are required by TekExpress for SATA testing. To copy the files to the real-time oscilloscope, do the following:

1. Insert the TekExpress DVD Browser into the DVD-ROM drive of a Real-time oscilloscope.
2. Select **SerialATA**, and from the next screen select **Copy Setup Files to Oscilloscope**.

---

**NOTE.** *When you choose a setup file option, the TekExpress DVD must be inserted in the appropriate instrument type for SATA testing to work successfully. If the TekExpress DVD is in a desktop or laptop PC, files will be copied onto the particular PC, not to the appropriate instrument.*

---

# TekExpress SATA Installation Procedure

This section describes how to install the TekExpress SATA application for the first time using the TekExpress SATA DVD Browser.

The following applications and drivers are part of the installation:

- Microsoft .NET Framework 2.0
- NI TestStand Engine 3.5.0.725
- OpenChoice TekVisa 3.3.2
- MATLAB Component Runtime 7.6
- DK2 Deskey Driver 6.21.0.169
- TekExpress Framework
- TekExpress SATA

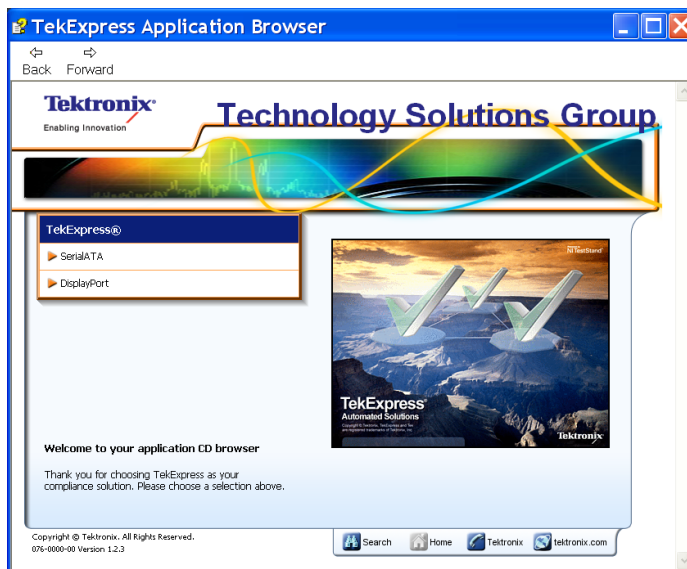
---

**NOTE.** *You may choose to install these components manually by browsing the “executables” folder on the DVD. If you prefer to do a manual installation of these components, it is recommended that you follow the order mentioned above and then install TekExpress.*

---

Do the following to install the TekExpress SATA software:

1. Insert the TekExpress DVD into the DVD-ROM drive.
2. Start the installation using the auto-run disk browser. Alternatively, you can copy the disk contents to a local system drive and execute the `Launch.exe` from the root location of the install files. The following browser screen is displayed.



3. Select **SerialATA** and then **Software Installer** to display the **TekExpress Start Installation** browser page. Click **Next** to begin the installation.

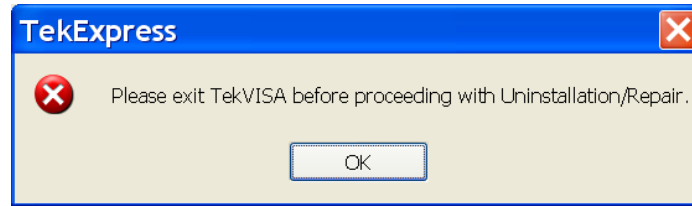


---

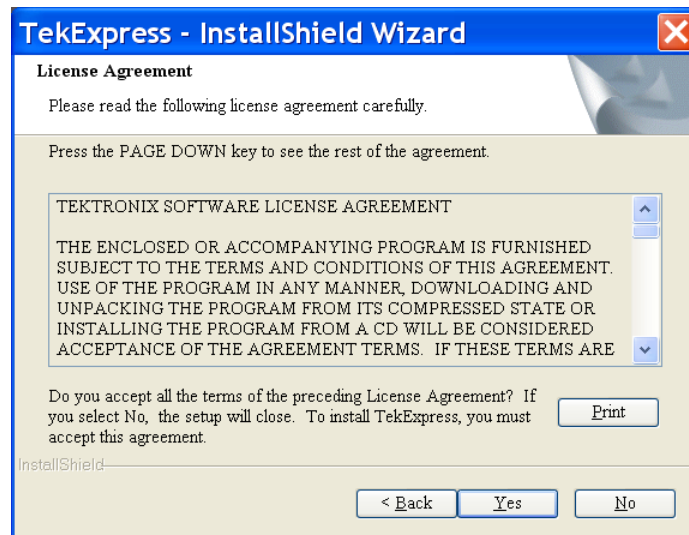
**NOTE.** If TekExpress was previously installed on your computer, refer to *Custom Installation*. (See page 12, *Custom Installation*.)

---

- If TekVISA is open, you will be prompted to exit TekVISA before proceeding with the installation. Close TekVISA and click OK in the following dialog box.



- Read the license agreement carefully and choose **I accept the terms of the license agreement**. Click **Next** to continue.

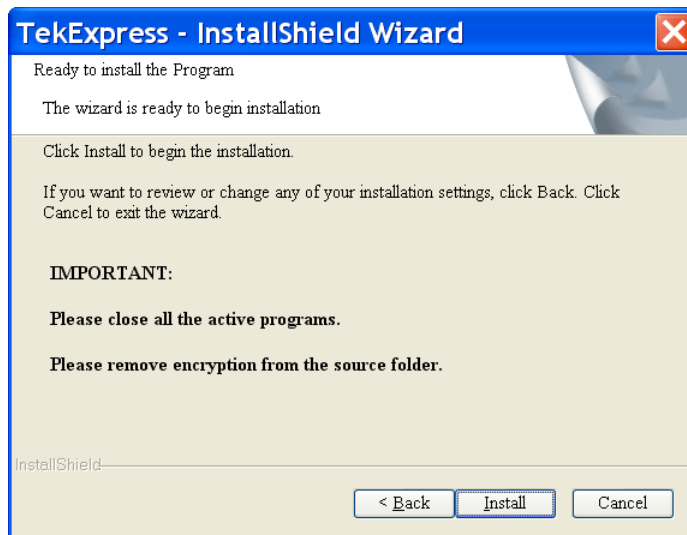


- In the **Ready to Install the Program** screen, click **Install** to begin the installation.

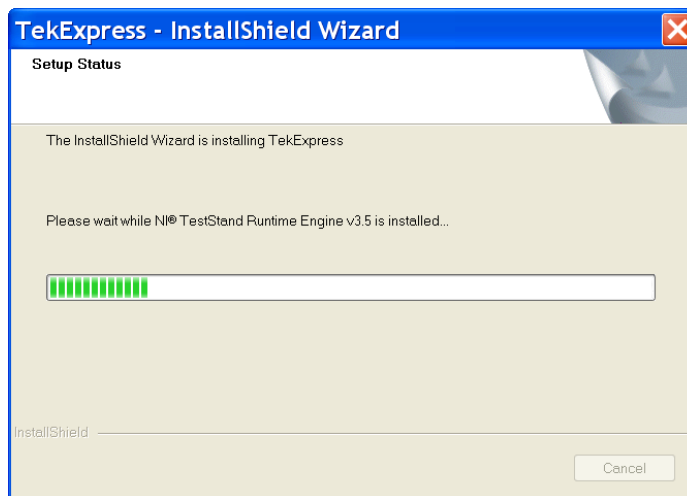
---

**NOTE.** Close all active applications and remove encryption from the drive (C:) where the application will be installed.

---

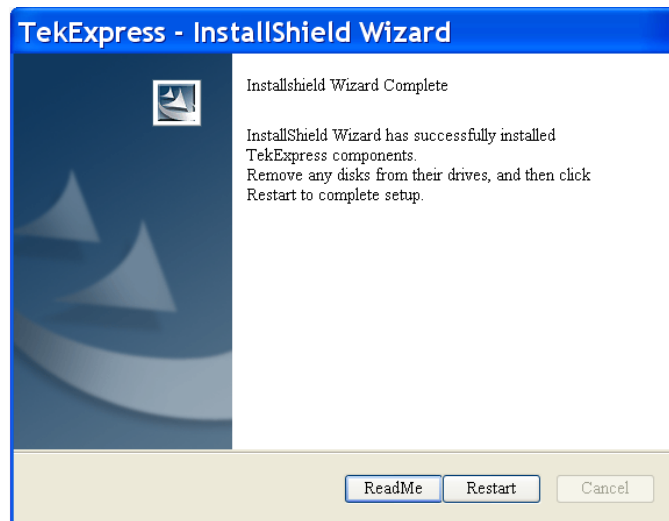


7. The **Setup Status** screen displays the progress of all the installer components.





8. In the **InstallShield Wizard Complete** screen, follow the instructions and click **Restart** to complete the setup.

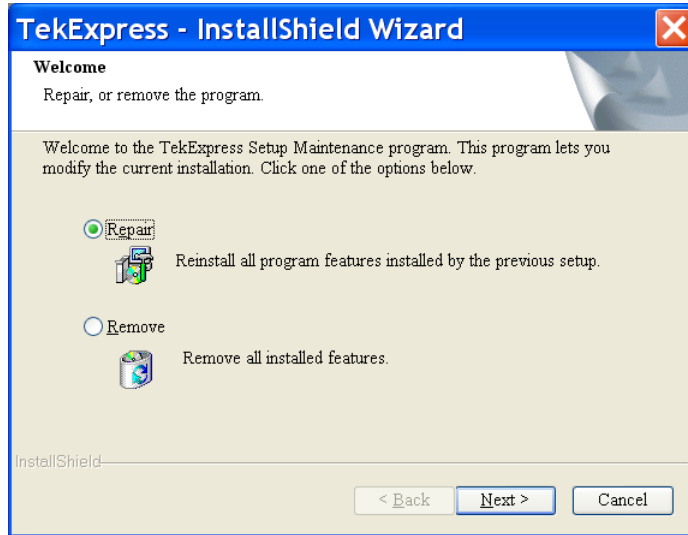


# Custom Installation

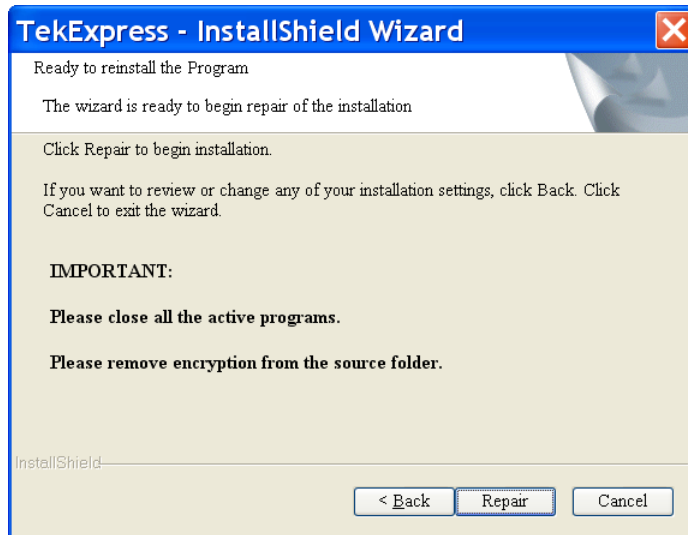
In the **Welcome** screen, you can choose to repair or to uninstall TekExpress SATA components.

## Repairing TekExpress SATA Installation

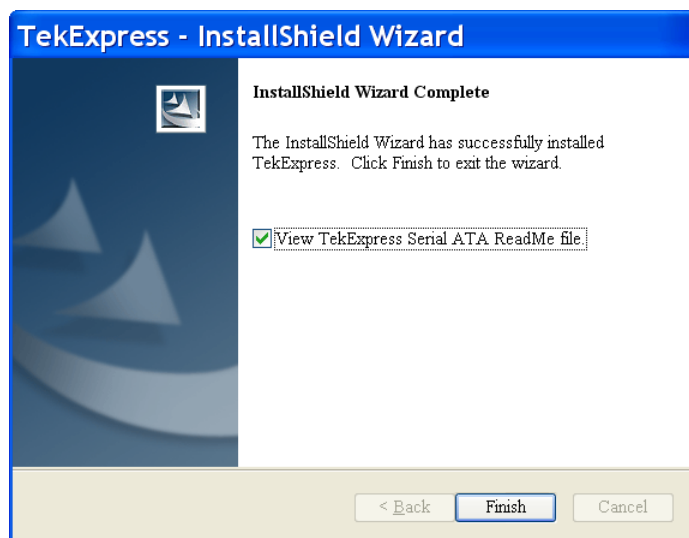
1. Select **Repair** and click **Next**.



2. Close all active applications and click **Repair**.

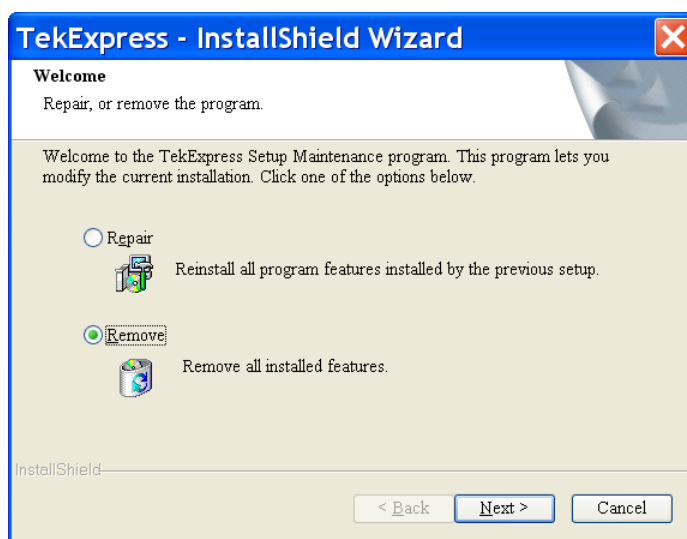


3. Click **Finish** in the **InstallShield Wizard Complete** screen.



## Removing TekExpress SATA

- Select **Remove** and click **Next**.



The Remove option is similar to uninstall process. For more details, refer to Uninstalling TekExpress section. (See page 15, *Uninstalling TekExpress SATA*.)

## Launching the Application and Online Help

The application uses a USB dongle that contains the license key. This dongle must be present on the PC hosting the TekExpress application. The application also checks for the `Resources.xml` file located in the `My TekExpress` folder. If this file is not found, an instrument discovery is performed before launching TekExpress. The `Resources.xml` file contains information about the instruments available on the network.

At startup, the application checks for the appropriate license key. If a valid license key is not present, the application switches to the “Demo” mode. If the application fails to detect the dongle, it continues to run in the Demo mode.

To start the application, you can do one of the following:

- Click **Start > Programs > Tektronix > TekExpress > TekExpress SATA**.

- Double-click the icon  on the desktop.

When the application starts, it displays the following splash screen providing launch information. The application also checks for the presence and the validity of the USB dongle.

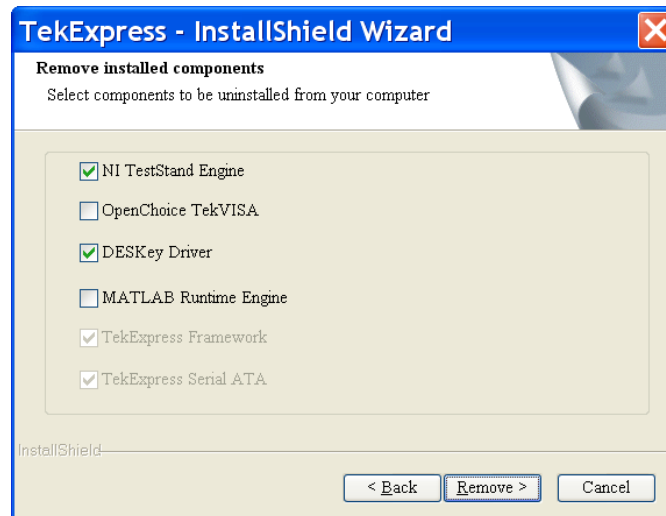


You can view the online help by clicking **Start > Programs > Tektronix > TekExpress SATA > Help**.

## Uninstalling TekExpress SATA

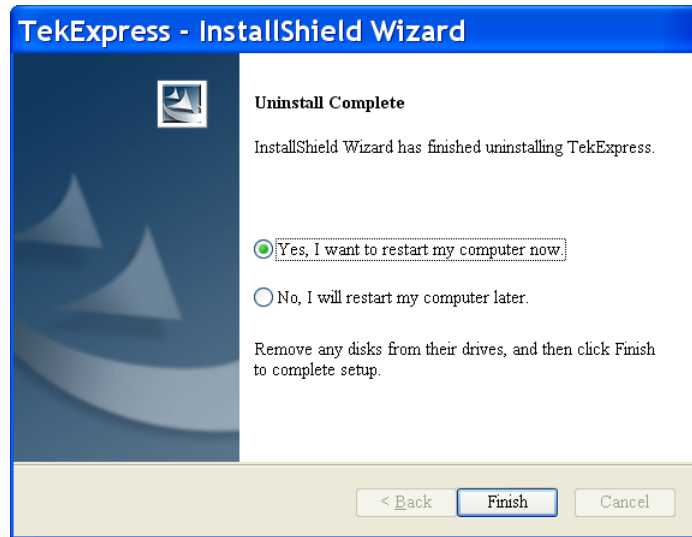
To uninstall the TekExpress software, do the following:

1. From your PC desktop, select **Start > Settings > Control Panel**.
2. Click the **Add or Remove programs** icon.
3. Select **TekExpress** from the list and click **Remove**.
4. Select the components that you want to remove and click **Remove**.



5. You are prompted to confirm the removal of DESKey Driver and its components. Click **Yes** to proceed with the DESKey uninstallation or **No** to skip DESKey uninstallation.
6. Click **OK** in the final DESKey Driver window to continue.
7. In the National Instruments Software window, select NI Test Stand 3.5 and click **Remove**. In the Dependent Products window, click **Remove All**. To continue uninstalling the application, click **No** when you are prompted to restart the computer.
8. Next, select LabView Run-Time Engine 8.5 and click **Remove**. To continue uninstalling the application, click **No** when you are prompted to restart the computer.
9. Click **Close** once the NI Test Stand Engine is uninstalled.

10. Click **Finish** in the uninstall complete screen.



You can also uninstall other TekExpress software components using Add or Remove Programs (see the complete list of software components in the TekExpress Installation Procedure).

---

**NOTE.** *Some of the software components like TekVISA and .NET 2.0 may be used by applications on your system other than TekExpress. Before removing any other TekExpress software components, verify that those components are not used by other software applications.*

---